



SOLAR PRODUCTS INC.

THE INFRARED HEATER COMPANY

Solar Products, Inc. the Infrared Heater Company

Solar Products V-Series Vs. The Competition A Head-To-Head Comparison

Fast-responding, medium-wavelength, infrared panel heaters using stamped serpentine elements have been used in industry for decades. In traditional construction, the flat elements are held against a refractory board by manually inserted pins. Solar Products Inc. has developed a unique V-shaped element which provides numerous performance improvements over conventional stamped element heaters including the following:

- Reduced thermal back-losses
- Higher watt density
- More robust construction
- More freely radiating design
- Longer life
- Elimination of hot spots
- Improved heating uniformity
- Lower cost

According to Paul Ross, VP of Product Development "*...Solar Products didn't invent the stamped element heater, but we certainly perfected it...*"

Recently, Solar Products pitted their V Series heater against the competition in a head-to-head comparison.

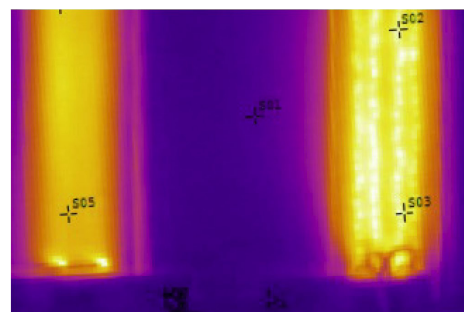
Solar Products built a V series heater to closely match a sample heater from a leading competitor. Both heaters were 4.25" x 13.75" with (2) elements of 11" heated length. The competition used 0.135" thick elements and Solar used its' closest match, 0.139" thick. To compensate for the slight difference in resistance, the voltage was adjusted so that each heater produced the same total wattage of 1,481W

Reduced Thermal Back Losses & Increased Radiant Efficiency

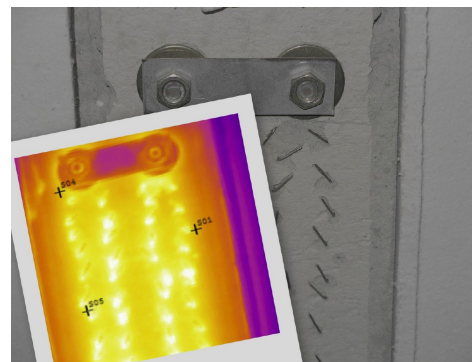
With both heaters operating at the same wattage for the same period of time, a thermal imaging camera from Electrophysics was used to capture an image of the back side of the heaters.

In thermal imaging, the hottest temperature is represented by the brightest color. The images clearly show how much more heat is lost to the back side of the heater via conduction along the numerous element retaining pins.

The elimination of heat-conducting pins is one giant step in reducing back losses. Another giant step is the use of 2" of insulation behind the board which is standard construction for the Solar Products V Series heaters and is not even offered by the competition. The combination of these two factors gives the V series greatly reduced back losses and therefore, increased radiant efficiency.



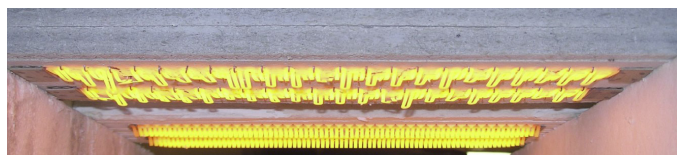
Thermal image of back side of heaters V series on left. Conventional pinned element on right



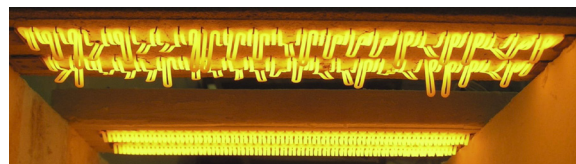
Close-up of pinned element

Higher Power Capability/Longer Life

The alloy used for stamped element heaters has an upper temperature limit of 2,370 oF. In conventional (pinned-element) construction however, the allowable temperature range is reduced by the poor hot-strength performance of their elements which are only intermittently supported by pins. Because the V series elements are securely anchored every 1/8" along their entire length, they are able to withstand higher element temperatures without sag or element bunching. In addition, the V shape makes the elements more rigid and controls the element's thermal expansion and contraction so that the element will not distort even at extremely high temperatures. The exceptional hot strength extends the allowable temperature range for V series elements. The V series is available at watt densities up to 100WSI, a level that was previously unachievable by any medium wavelength panel heater. To illustrate the exceptional hot strength of the V-Series elements, the heaters were subjected to a torture test. The voltage was adjusted so that both heaters operated at an element surface load of 75 watts per square inch. This resulted in the competitor's heater running at 2,040W and the V-Series heater running at 2,119W. The heaters were operated face-down and cycled on and off for 2.5 minute intervals. The test ran 24 hours a day for a period of two weeks.



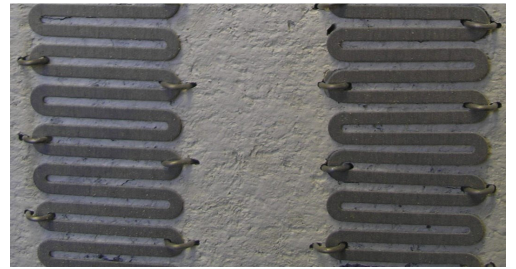
Pinned element beginning to distort



Pinned element distorted

The before and after photos show that the V series heater looks like new whereas the competitor's has suffered a tremendous amount of element sag and creep. It simply cannot stand up to the element temperatures and wattage loading that the V series can. It should be noted that pinning every single loop would not be a good solution for conventional construction. Although this would diminish element sagging, it would significantly increase the cost, significantly weaken the board, significantly increase back losses, and create new thermal expansion issues.

After high temperature testing, the V series heater retains its original uniformity while the competitor has portions of elements hanging closer to the product than others. With difficult-to-process materials, this may result in non-uniform heating. The distorted element will fail more quickly as a result of element loops moving closer together and creating hot spots.



Pinned elements before high temperature cycling

Increased Strength

The numerous mounting pins in conventional stamped element heaters perforate the refractory and significantly weaken it to the point that when shipped in a horizontal plane, the heater frequently breaks under its own weight. For this reason, it is common for OEMs to remove heaters from a machine to be packed and shipped separately and then to be re-installed on site. This additional handling can be costly.



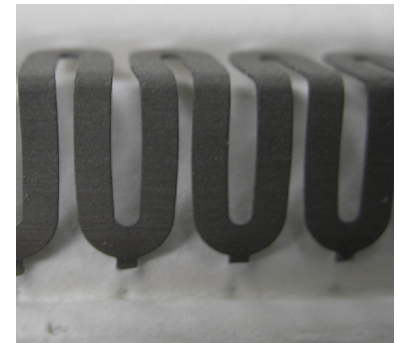
Pinned element distorted

The bonded V-shaped element actually increases the board strength. The cement in the mounting grooves has been found to penetrate into the board, bond with the fibers, and increase the strength. Further, the metallic element with its anchors cemented into the grooves reinforces the board further so that the finished board is stronger than it was originally.



Pinned elements after high temperature cycling

With the V-series' robust panel heater construction, there is no need for costly special handling.



Close-up of V-series after high temperature cycling

Summary of benefits

1. Individual elements are potentially replaceable

(provided board is not cracked or broken)

V-shaped elements permanently bonded to refractory board

1. Less Expensive: laborious manual insertion and folding over of pins is eliminated thus resulting in a more economical heater
2. More efficient:
 - a. Thermally conductive heat-robbing pins are eliminated
 - b. 2" of TIW insulation behind the refractory board reduces back-side heat loss and improves transfer of heat to the product.
3. Robust construction: Refractory board is not perforated by numerous pins which makes our board much stronger. Refractory board does not develop cracks at high temperature
4. No special handling: Equipment can be shipped with heaters installed. Save money by not removing, packing, and then re-installing on site.
5. High power capability: The highest power capability of any medium wavelength panel heater in the world. Save money by installing fewer heaters.
6. Longer life: More freely radiating elements, plus secure anchoring, plus controlled thermal expansion/contraction, plus elimination of element sag/ creep all add up to longer life.





SOLAR PRODUCTS INC.

THE INFRARED HEATER COMPANY

QUESTIONS?

If you have any questions or comments about this handbook, we would enjoy hearing your viewpoints. Give us a call us at: **973-248-9370**